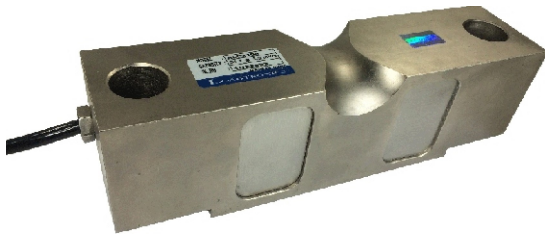


MODEL:ALC2100
CAPACITY(T):22.5,34.0



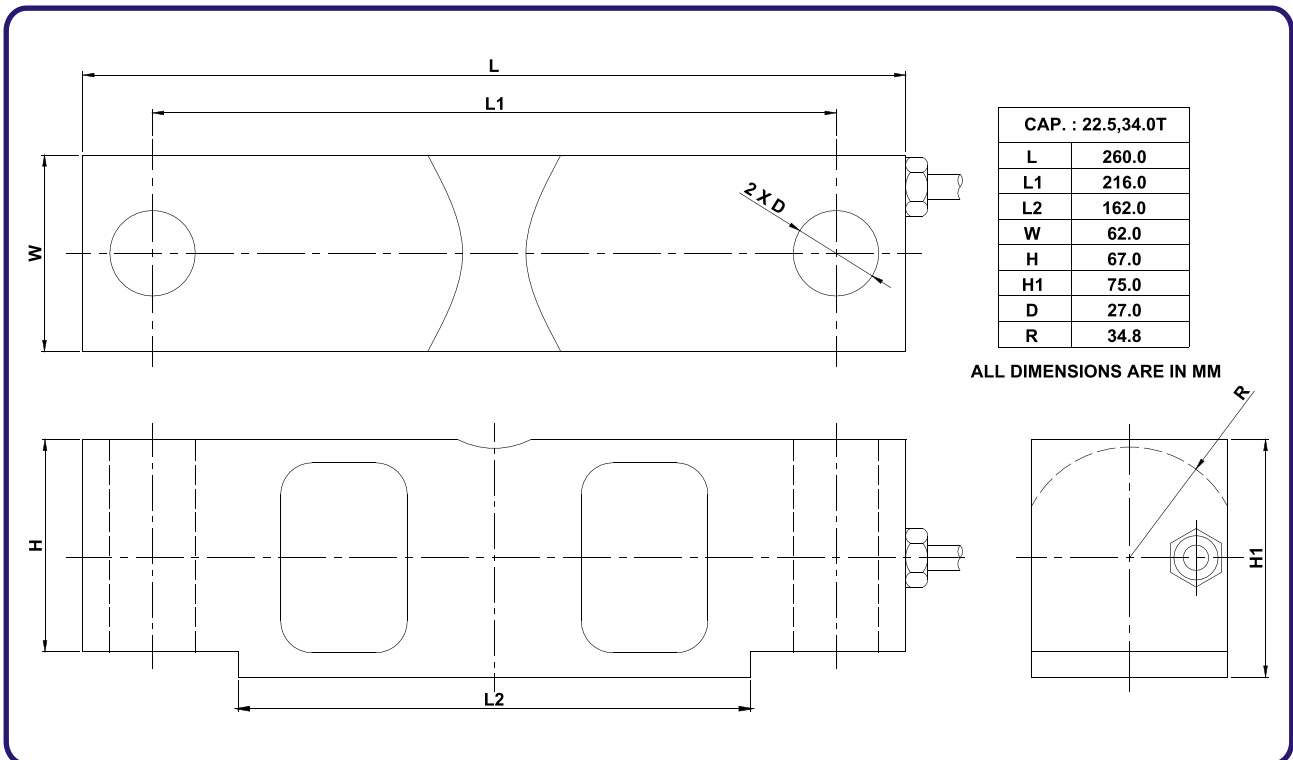
FEATURES:

- High Accuracy
- Dual shear beam
- Easy installation and reliable performance



APPLICATION:

Dual shear beam, suitable for Electronic truck scales, Hopper scales, Dynamic scale and other electronic weighing devices.



TECHNICAL FEATURES

SENSITIVITY(mV/V)	: 3.0 mV/V ± 0.4%
INPUT RESISTANCE	: 700 Ohms ± 10
OUTPUT RESISTANCE	: 700 Ohms ± 5
ZERO BALANCE	: 0 ± 2%
EXCITATION VOLTAGE	: 10 VDC
MAXIMUM EXCITATION	: 15 VDC
SAFE LOAD	: 150%

ULTIMATE OVER LOAD	: 300%
CREEP 30 MINUTES	: < ± 0.020
NON LINEARITY	: < ± 0.025
TEMP. COMP. RANGE	: -10°C / 40°C
TEMP. OPERATING RANGE	: -20°C / 70°C
INSULATION RESISTANCE	: >1000 Mohms
PROTECTION CLASS	: IP 67